

ATrIS INSTALLATION

Download the application at:

http://www.faoadriamed.org/download/2.1Suite_ATrIS.zip

below useful information about ATRIS, please read the user manual it can help you to understand how to take the best use of ATRIS.

IMPORTANT: ATrIS OPTIMIZED FOR WINDOWS XP.

USEFUL INFORMATION 1)

Once downloaded [2.1Suite_ATrIS.zip](#)

- 1) Unzip the file: it contains the folder 2.1Suite_ATrIS. We do recommend to burn a CD-ROM with all the files included into the folder 2.1Suite_ATrIS: an auto run CD-ROM will be created.
- 2) Just launch the CD-ROM on your PC and follow the indication given in the web installation-page. If you prefer, do not create a CD, and open the file **index.html** on your Hard disk.
- 3) Install both the server (first) and the client (the wizard will help you during the installation) and refer to the User's Manual for information
- 4) Launch ATrIS from the START Menu Bar
- 5) Set up the ATrIS Reference Files
- 6) Open ATrIS
- 7) Insert User name (admin) and Password (admin)

We detected some problems which occurred according to the operative system used (e.g. Windows version employed in Croatia and Slovenia use some settings which create conflicts with ATrIS standards). When install ATrIS, please verify the International Settings set on your PC: e.g. in Regional Options select the mask Number and modify the Decimal Symbol in a dot (.) and Digit grouping symbol in a comma (,).

After having installed the application you will be requested a registration code. Please contact the Project providing the User Name and Serial Number given in your copy of ATrIS to get the registration code.

Kindly note that AdriaMed supplies the application of ATrIS free under the respect of a unique condition: the Institution should put in evidence, when using ATrIS, that the application has been supplied by the FAO AdriaMed Project..

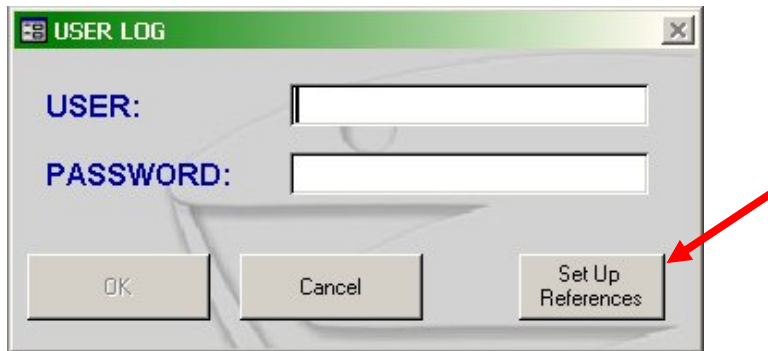
USEFUL INFORMATION 2)

Please CHECK if the LINK to SERVER and CLIENT are RIGHT.

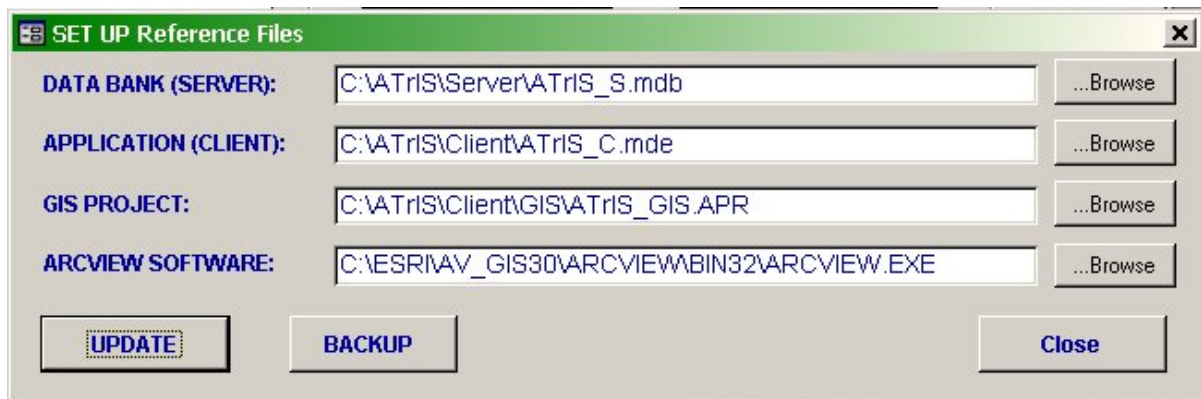
Name of the server : **ATrIS_S.mdb**

Name of the client: **ATrIS_C.mde**

- 1) Launch ATrIS
- 2) The following mask will be shown for few seconds
- 3) After few seconds a new mask will be displayed



- 4) Click on the magic wand button. A **Setup Reference Files** mask will be shown.

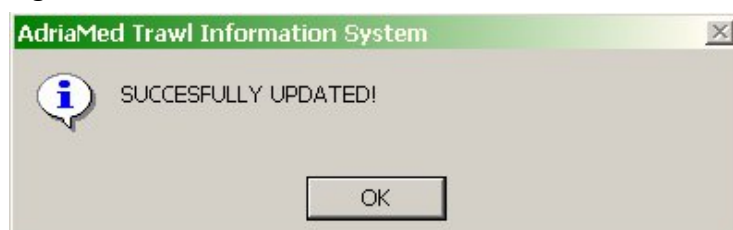


Please note that the system will automatically compile all the fields except for the last one (see point 4), NOT NECESSARY.

- 1) DATA BANK (SERVER): the system has already compiled this field correctly if a default configuration has been chosen. If you changed the Set up installation path please insert the new correct path by clicking on the BROWSE button.
- 2) APPLICATION (CLIENT): the system has already compiled this field correctly if a default configuration has been chosen. If you changed the Set up installation path please insert the new correct path by clicking on the BROWSE button.
- 3) GIS PROJECT: This part represents the graphic tool of ATrIS. During the installation a directory GIS will be created under C:\ATrIS\. If you changed the Set UP installation path please insert the new correct path by clicking on the BROWSE button.
- 4) ARCVIEW SOFTWARE: ATrIS contains some graphic features which can only be opened with ArcView software. The system will leave this field blank: if your PC has a registered version of ArcView please indicate the path of the executable file (ArcView.exe), NOT NECESSARY

Please note that to configure the system points 1 and 2 are needed and must be compiled. Points 3 and 4 are not needed for the correct functioning of the system. If you leave blank the GIS PROJECT and ARCVIEW SOFTWARE fields the system will work but the graphic tools will be not available.

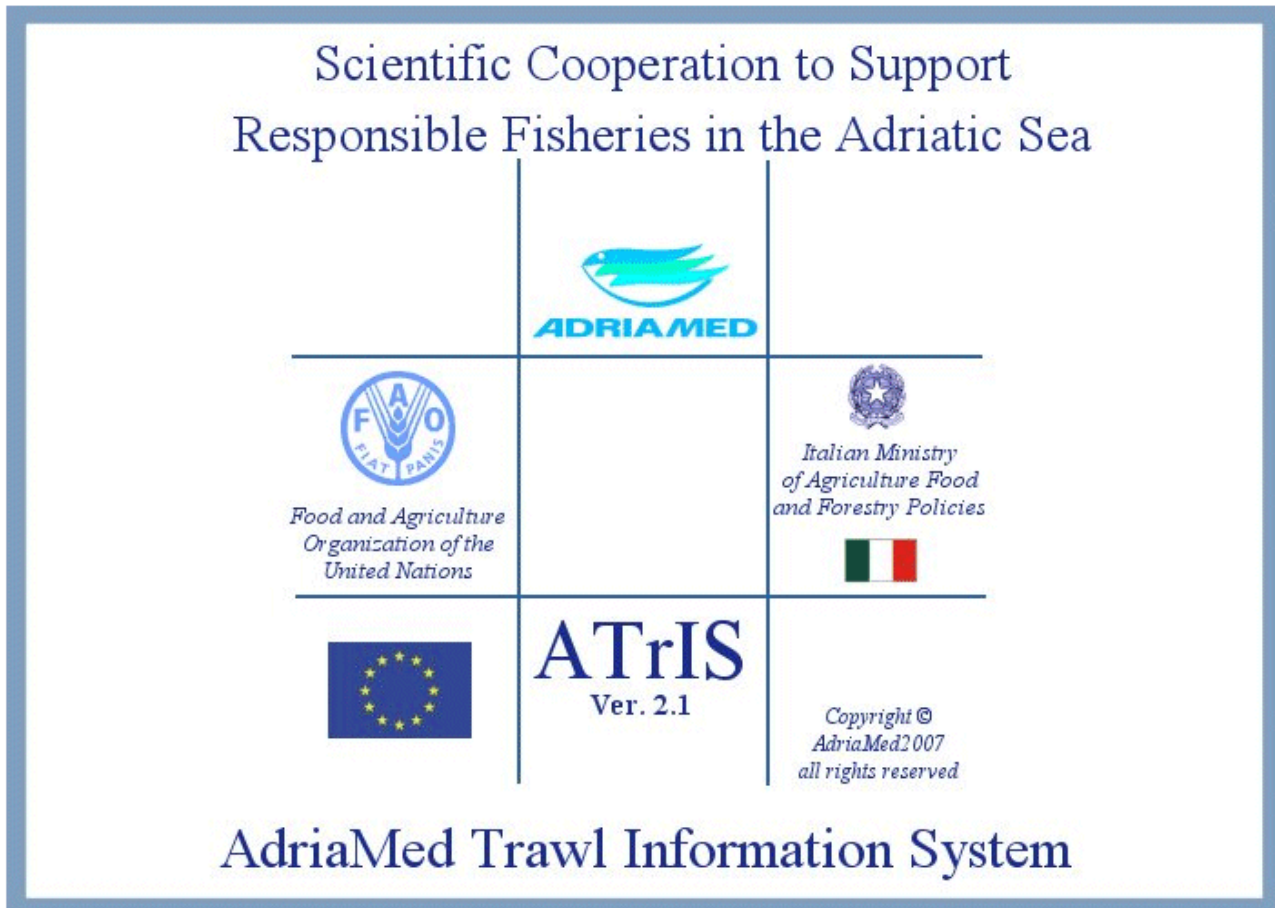
- 5) Click on UPDATE to activate the new references
- 6) The following mask will be shown.



Click on OK. Please note that if this mask will be not displayed an error has occurred. Check the path and try again.

USEFUL INFORMATION 3)

Once you have unzipped 2.1Suite_ATrIS.zip double clic on INDEX.HTML



[INSTALL](#) ✓

[upgrade version](#) ✓

USER MANUALS:

[USER MANUAL](#)

[BIOLOGICAL INDICATORS](#)

[QUICK START](#)

[ATrIS Video Demo](#)

To start the Demo please click "RUN" at the following messages

Browse CD

and CLICK ON ATrIS Video Demo.

The demo is stored on the folder 2.1Suite_ATrIS\Manual\ATrIS_Demo,
or you can download it at the link:

http://www.faoadriamed.org/download/ATrIS_Demo.exe 13,6MB

MORE EXHAUSTIVE DEMO AT THE LINK

http://www.faoadriamed.org/html/atris/atris_demo.html